



Product Datasheet

Part Code: VSDC-1024-7W-UPS

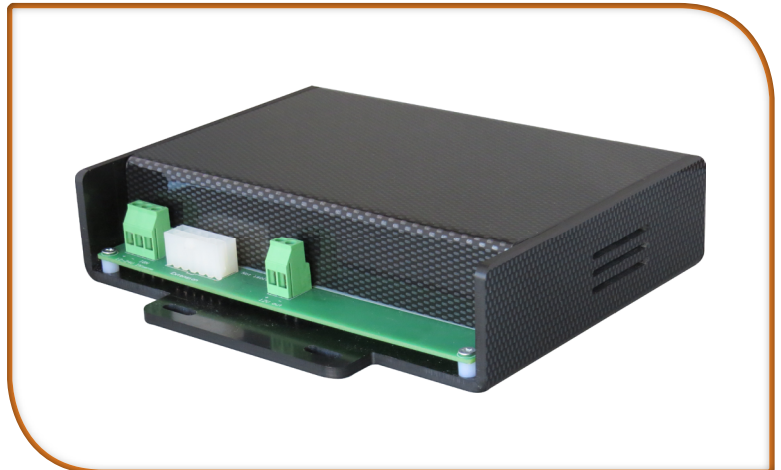
Vidisafe Compact

Automotive power distribution unit for use with Vidistor Compact DVR

This unique technology features permanent electrical spike monitoring, positive and negative earth fault protection. Vidisafe powers and protects CCTV Camera, WLAN, 3G Modules and CCTV Monitors. It is also EN-55022-06-A and FCC Part 15-B standards compliant.

Key Features

- Wide Range PSU/PDU protection for 12VDC and 24VDC vehicles
- Permanent Spike Monitoring Technology
- Positive and negative earth fault protection
- Thermal fuse, self-healing technology
- Full reverse polarity protection
- Easy-wire installation system
- Built in cable protection / cable-tie management
- 12VDC 7.5 Amp output for ancillary devices
- Powers, protect and isolates CCTV cameras
- Powers, protect and isolates WLAN / 3G modules
- Powers, protect and isolates CCTV monitors
- EN-55022-06-A & FCC Part 15-B compliant
- Wide range DC power input 10 ~ 30VDC



Specifications

	Function		Balanced Wide Ranged Supply	
Input Power			10-30VDC	60 Watts
Max Output Current			7A	± 5%
Output Power				
	DVR	Out 1	12V	± 5%
	Camera	Out 2	12V	± 5%
	Camera	Out 3	12V	± 5%



Product Datasheet

Vidisafe Compact

Specifications....continued

	Function		Protected Device	
Output Power	Camera	Out 4	12V	± 5%
	Camera	Out 5	12V	± 5%
	Camera	Out 6	12V	± 5%
	Camera	Out 7	12V	± 5%
	Camera	Out 8	12V	± 5%
	Camera	Out 9	12V	± 5%
Output Current	DVR	Out 1	2,5A	± 5%
	Camera	Out 2	0,2A	± 5%
	Camera	Out 3	0,2A	± 5%
	Camera	Out 4	0,2A	± 5%
	Camera	Out 5	0,2A	± 5%
	Camera	Out 6	0,2A	± 5%
	Camera	Out 7	0,2A	± 5%
	Camera	Out 8	0,2A	± 5%
	Camera	Out 9	0,2A	± 5%
	Spike / Load Dump Protection	Input		Yes
Short Circuit Proof	Output		Yes	
Negative Input Power Proof	Input		Yes	
Fuse Type	Output		Resettable PTCs	
LED Indication	Version / S		No	
	Version / L		Yes	Power Health / DVR Health / HDD Health / Camera Health
Delayed Start Up			Yes	
Delayed Turn Off			Yes	
Enclosure			155 x 150 x 38mm	